

# BRITAIN'S GREAT ESTATES



**BURLINGTON  
STONE**

EST 1843





Wentworth Woodhouse – South Yorkshire  
Westmorland green slates – Donald Insall Associates



From the early 1600s, the roofing slate, architectural stone and landscaping material that Burlington Stone quarry in Cumbria and the Lake District has been prized by clients and architects for its exceptional quality, and Britain's great Estates, which have been built on the principles of permanence and longevity, have made very good use of these finest of British natural materials to create beautiful and long lasting buildings.

Since 1843 the Cavendish family of Holker Hall Estate have been the guardians of this 500 year old industry. Today the family continue to oversee the production of these traditional British slates and stones using time honoured British craftsmanship, preserving skills that have been passed down through generations, and combining them with new technology and innovations in stone extraction and processing to provide an environmentally sustainable, long lasting, quality natural material.

- 4 ROOFING
- 16 ARCHITECTURAL
- 26 LANDSCAPING

Cover: Wentworth Castle – Burlington blue/grey slates





4

5



BURLINGTON  
ROOFING

Holker Hall – Burlington blue/grey slates





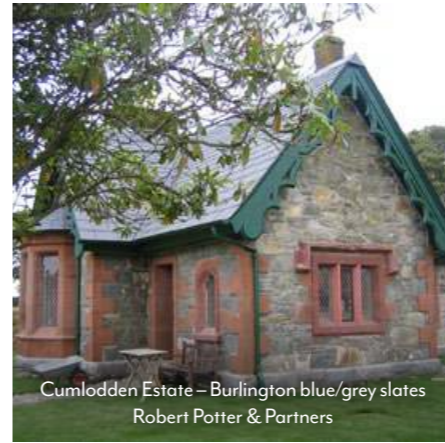
Shambellie House – Westmorland green slates



Buccleuch Estates – Burlington blue/grey slates



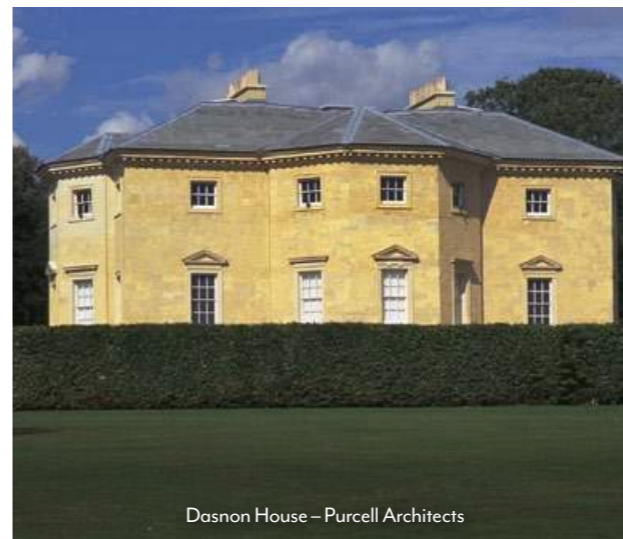
BURLINGTON'S BLUE/GREY AND WESTMORLAND GREEN ROOFING SLATES HAVE BEEN USED FOR CENTURIES ON PROJECTS WHERE CLIENTS AND ARCHITECTS HAVE SOUGHT A MATERIAL THAT IS BOTH FUNCTIONAL AND BEAUTIFUL, AND THAT ALLOWS THEM TO MAKE A STATEMENT OF QUALITY AND PERMANENCE.



Cumloddan Estate – Burlington blue/grey slates  
Robert Potter & Partners

**Burlington's British natural slates are:**

- **NATURALLY STRONG**
- **NATURALLY WEATHERPROOF**
- **NATURALLY BEAUTIFUL**



Dasnon House – Purcell Architects



Coachman's House – Burlington blue/grey slates

Burlington slates offer a lifetime of service to the buildings they cover, as evidenced by an ancient pedigree of proven performance that is unrivalled in the harsh UK climate and our credentials are endorsed by clients both past and present.

These natural slates are sympathetically extracted from our quarries in the heart of the English Lake District. Using highly skilled craftsmen, with experience passed down through the generations, we produce exquisite British natural slate, ensuring our products meet and exceed our customers' expectations. Three different slates are produced from the quarries in Cumbria: a blue/grey slate (today called Burlington blue/grey, its traditional name was 'Lancashire blue/grey', dating back to the quarries beginnings in the 16th century when Kirkby quarry was located in Lancashire, prior to the formation of the county of Cumbria in 1974), and two subtly different shades of green slate – Westmorland light green and Westmorland olive green.

Traditionally produced in random lengths and widths the slates are laid in diminishing courses with the largest slates used at the eaves and gradually smaller sizes laid working up to the ridge. The production of slates in diminishing courses was an early form of an environmental sustainability with the manufacture of random sizes ensuring the efficient use of random size blocks of raw material, and this approach is still undertaken today.

This tradition of laying slates in diminishing courses gives a distinctive visual perspective to the roof. Slates can also be supplied in a sized format (fixed lengths with random widths) which helps to retain a traditional random element to the roof design, whilst speeding up the laying process and keeping the cost of installation down.

For a regular half bond pattern to the roof, slates are available with a fixed length and fixed width.





BURLINGTON  
BLUE / GREY

TRADITIONAL NAME  
LANCASHIRE BLUE / GREY



WESTMORLAND  
LIGHT GREEN CALIBRATED



WESTMORLAND  
OLIVE GREEN

**SENSITIVELY  
EXTRACTED**  
—  
**EXPERTLY  
CRAFTED**

## REASONS TO USE BURLINGTON'S BRITISH NATURAL ROOFING SLATES



1. Burlington Slate is one of the finest most durable natural materials in the world and covers the roofs of many of the most iconic historic buildings across the UK.
2. The technical characteristics of Burlington slate ensure a life span of over 150 years, providing a long term sustainable solution.
3. Burlington's slate roofing products adhere to and surpass the European quality standard BS EN 12326, achieving the highest possible classification in each of the key categories: Water Absorption ( $W1 \leq 0.6\%$ ), Thermal Cycle Resistance (T1) and Sulfur Dioxide Exposure (S1). These test results are a key indication of reliability, however, even more importantly, Burlington Slate demonstrates its quality by an ancient pedigree of proven performance that is unrivalled in the harsh UK climate.
4. No part of a building is more exposed to the destructive forces of nature than the roof and, as such, it is a critical component of the building envelope from both a technical and aesthetic perspective. Burlington Slates are: Naturally Strong, Naturally Weatherproof and Naturally Beautiful.
5. Burlington Slate Limited was established in 1843 and is a British business with long traditions and values, where quality control and effective management and use of the natural slate reserves are important corporate goals.
6. The use of 'local' British slates on British projects ensures environmental efficiency and avoids the high and environmentally damaging 'slate miles' encountered by using imported slates on projects in the UK.
7. The company is certified to ISO 14001 environmental accreditation and aims to utilise 100% of the rock extracted from its quarry operations through the extensive recycling of all waste elements, important for BREEAM and LEED certification in building construction.
8. Burlington works closely with the BRE and The National Parks Authority to embrace best practice in environmental management.
9. Burlington is certified to ISO 9001 quality accreditation and our roofing slates conform with new CE Marking legislation, which ensures that every slate must have a Certificate of Origin and up to date technical test data. This provides protection for both the contractor and the customer that the material is fit for purpose.





Bowes Museum – Westmorland green slates



Leny Estate – Burlington blue/grey slates



Abbestead Estate – Burlington blue/grey slates



**BRITISH  
SLATE**  
—  
**TIMELESS  
APPEAL**



The Walled Garden, Home Eden Abbey – Burlington blue/grey slates





Duchy Field, Bletchingdon (Duchy of Cornwall) – Burlington blue/grey slates - Coleman Hicks Partnership; Francis Roberts Architecture



Dunsop Bridge (Duchy of Lancashire) – Burlington blue/grey slates – Francis Roberts Architecture



Clashindeugle House – Burlington blue/grey slates – LDN Architects





14

Keepers Cottage, Ardtornish Estate – Burlington blue/grey slates



WHETHER IT BE  
FOR CATHEDRALS  
OR COTTAGES,  
CASTLES OR CROFTS,  
BURLINGTON SLATES  
ADORN THE SKYLINE  
OF MAJOR CITIES AND  
RURAL AREAS ALIKE  
AND HAVE BEEN THE  
MATERIAL OF CHOICE  
FOR BRITAIN'S FINE  
COUNTRY HOUSES  
AND ESTATES  
BECAUSE OF THEIR  
AESTHETIC QUALITY,  
DURABILITY AND  
LONGEVITY.



Abbeystead Estate – Burlington blue/grey slates

15



Nansleddan (Duchy of Cornwall) – Burlington blue/grey slates  
Adam Architects



The Cart Barn – Burlington blue/grey slates





16

17



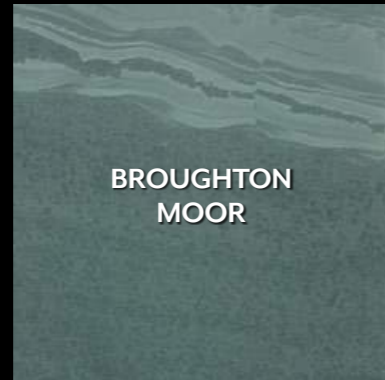
BURLINGTON  
ARCHITECTURAL

Brandy Crag honed flooring and flamed paving – :thatstudio





**BURLINGTON**  
—  
**ARCHITECTURAL  
STONE**



**BROUGHTON  
MOOR**



**BROSSEN  
STONE**



**BRANDY  
CRAG**



**BRANDY CRAG  
SILVER**



**KIRKBY**



**BAYCLIFF  
LORD**



**BAYCLIFF  
CAULFEILD**

## WE BRING 450 MILLION YEARS OF BRITISH GEOLOGY & 175 YEARS OF QUALITY BRITISH CRAFTSMANSHIP RIGHT INTO THE HEART OF YOUR PROJECT.

Pure Lakeland water, volcanic ash, natural weathering and mineral processes have slowly formed Burlington Stone, lending it unique technical and aesthetic properties. Hidden within Burlington Stone lies its true beauty waiting to be revealed. Distinctive colour and unique natural markings provide rich detail and sensitive tones; nature's signature displayed within each newly opened piece of stone. It has been formed deep within the Cumbrian Mountains – so it's dramatic, beautiful and made to last. For almost two centuries, Burlington has been the stone of choice for bespoke architectural finishes and Britain's great Estates and Country Houses have used its subtle qualities and colours to create distinctive and timeless design, bringing buildings and landscapes to natural life, making a statement of quality and permanence.

Incredible flexural strength and low water absorption mean it's robust, colour fast and easy to clean and maintain. This ancient stone can be worked in a variety of finishes, from rough-hewn to smooth, and with a stunning range of natural colours and markings it is timelessly stylish, but also endlessly practical.

Burlington Stone isn't simply quarried. It's lovingly crafted using a mix of time honoured techniques and cutting-edge technology. We treat the stone with respect, and it shows within the quality of our work. Carefully removed from its environment and carried a short distance to our workshops in Cumbria, our team of stone engineers and specialists then set to work.

Traditional skills, passed on through six generations of exceptional British craftsmen, alongside state-of-the-art laser cutting and modern production techniques, ensure attention to detail and allow the natural beauty and provenance of the stone to be brought to life. Burlington is committed to undertaking best practices to ensure the highest environmental standards are achieved. We hold ISO 14001 environmental accreditation and independent technical assessment highlights the longevity and durability of the stone and substantiates its claim to being a long term sustainable solution for your project, important for BREEAM and LEED certification. This is British material, shaped by the British landscape and by British specialists, so what could be a more natural choice of architectural stone for your project.





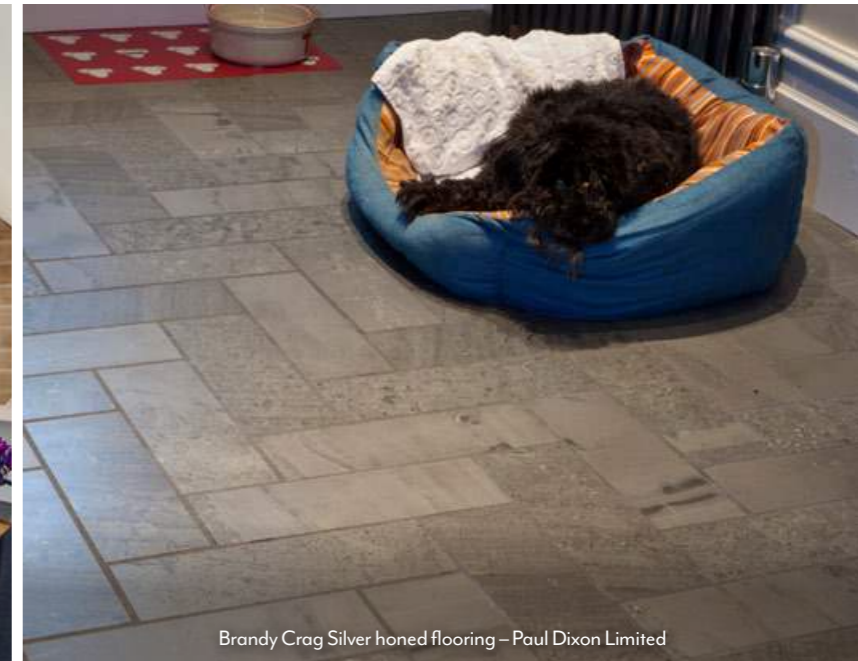
Brandy Crag honed flooring and worktops – Blackett-Ord Conservation



Brandy Crag honed flooring, wall tiling and vanity tops



Brandy Crag honed flooring – :thatstudio



Brandy Crag Silver honed flooring – Paul Dixon Limited

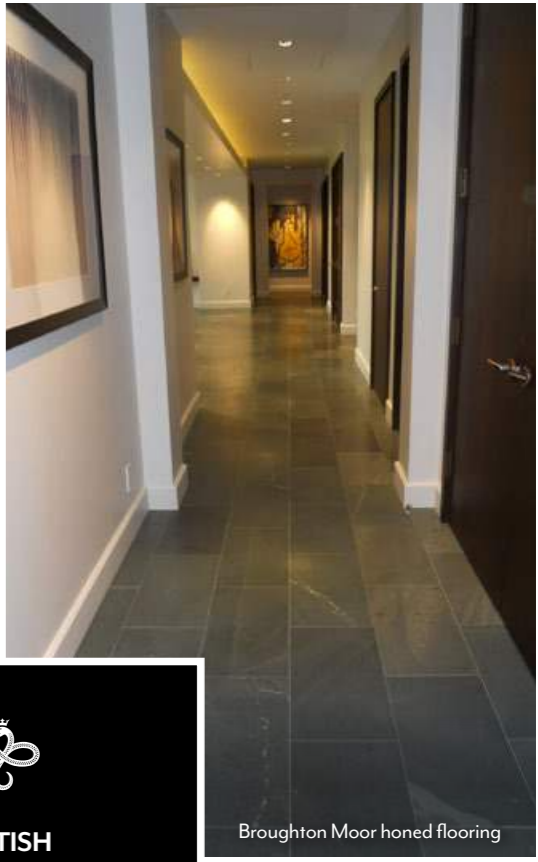




Baycliff Lord honed flooring with Kirkby honed lattice banding

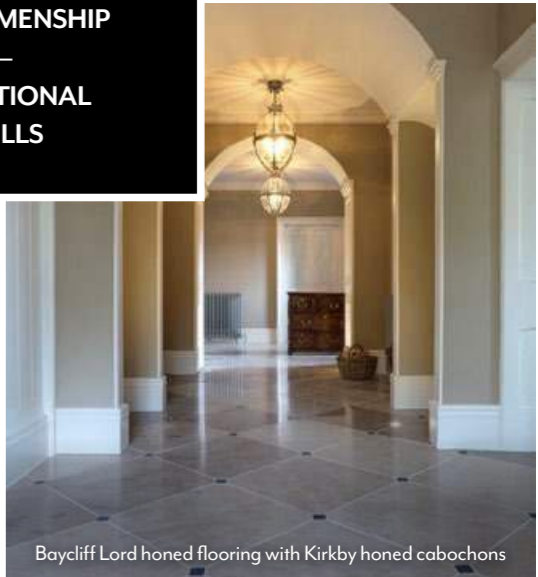


Brandy Crag Silver honed flooring



Broughton Moor honed flooring

  
**BRITISH  
CRAFTSMENSHIP**  
—  
**TRADITIONAL  
SKILLS**



Baycliff Lord honed flooring with Kirkby honed cabochons





Baycliff Caulfeild sanded flooring



Brandy Crag honed flooring and stair treads – Blackett-Ord Conservation



Broughton Moor bush hammered fire surround and hearth



Kirkby honed fire surround



BURLINGTON  
—  
LANDSCAPING  
STONE



BAYCLIFF  
LIMESTONE



CUMBRIAN  
BLACK



WESTMORLAND  
GREEN



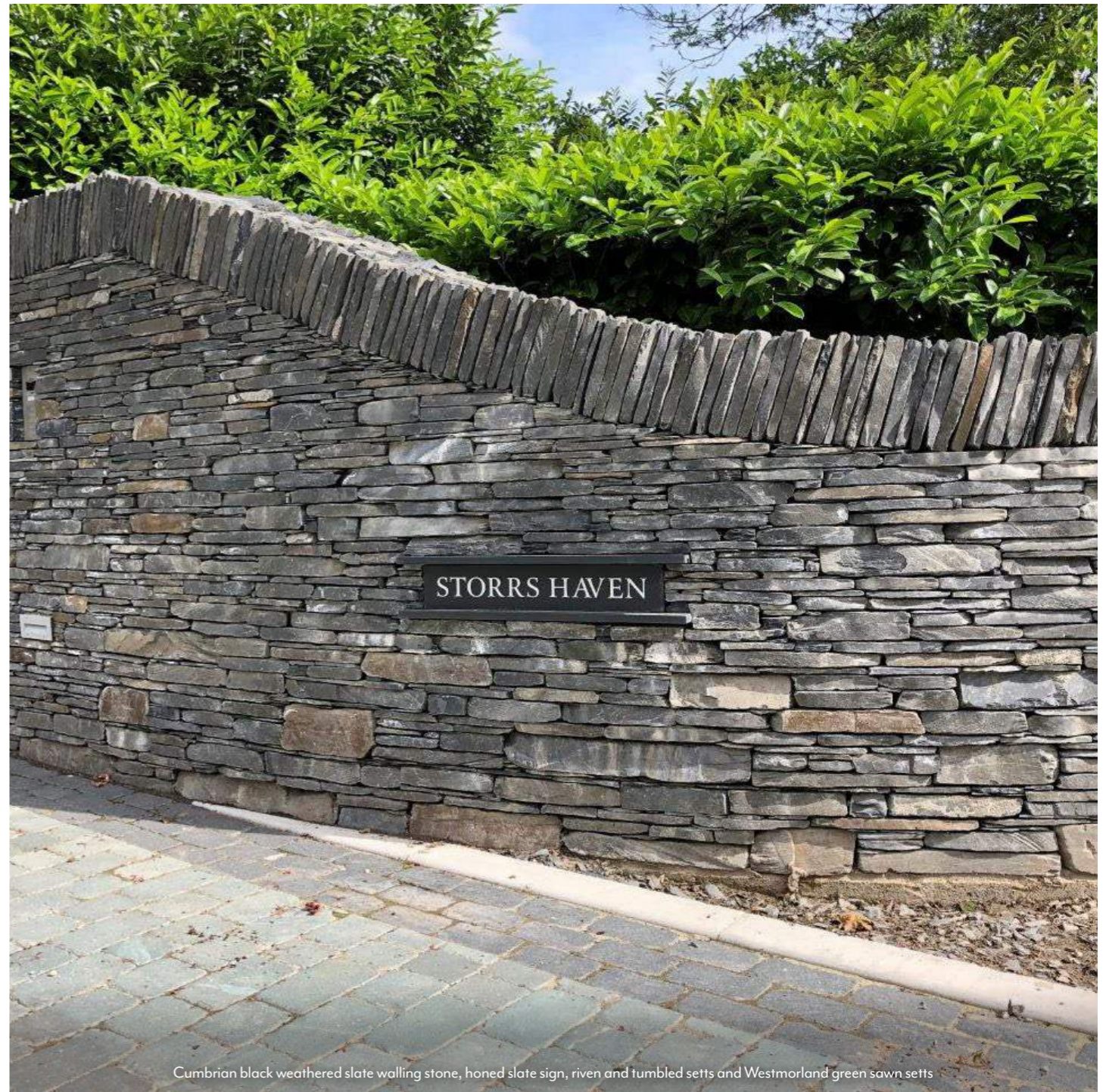
BURLINGTON  
LANDSCAPING

Westmorland green slate chippings, Cumbrian black path edgings and setts – Paul Dixon Limited





Kirkby honed sun dial feature

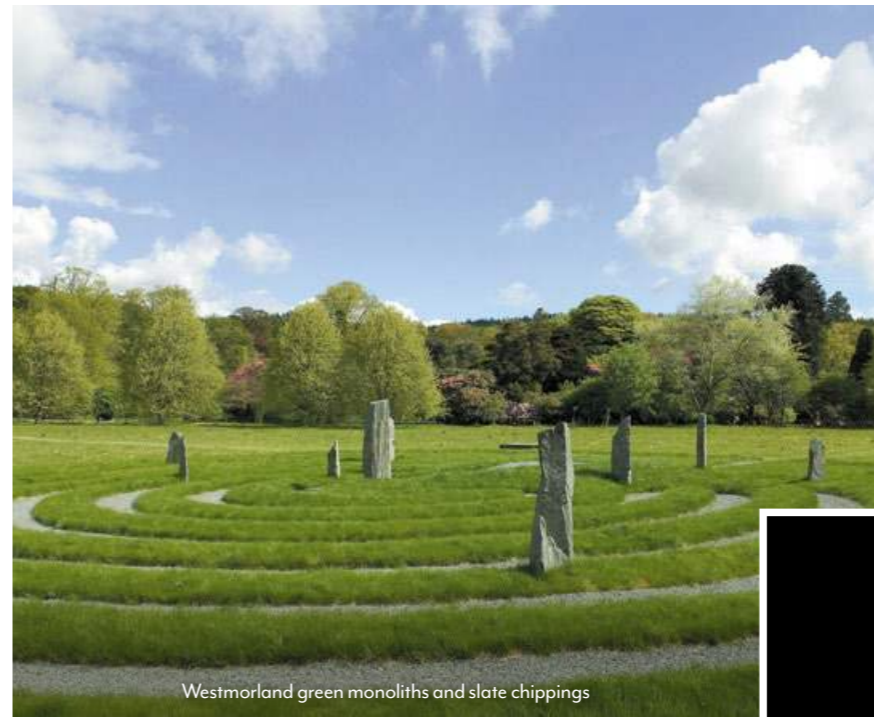


Cumbrian black weathered slate walling stone, honed slate sign, riven and tumbled sets and Westmorland green sawn sets






Cumbrian black riven paving and steps

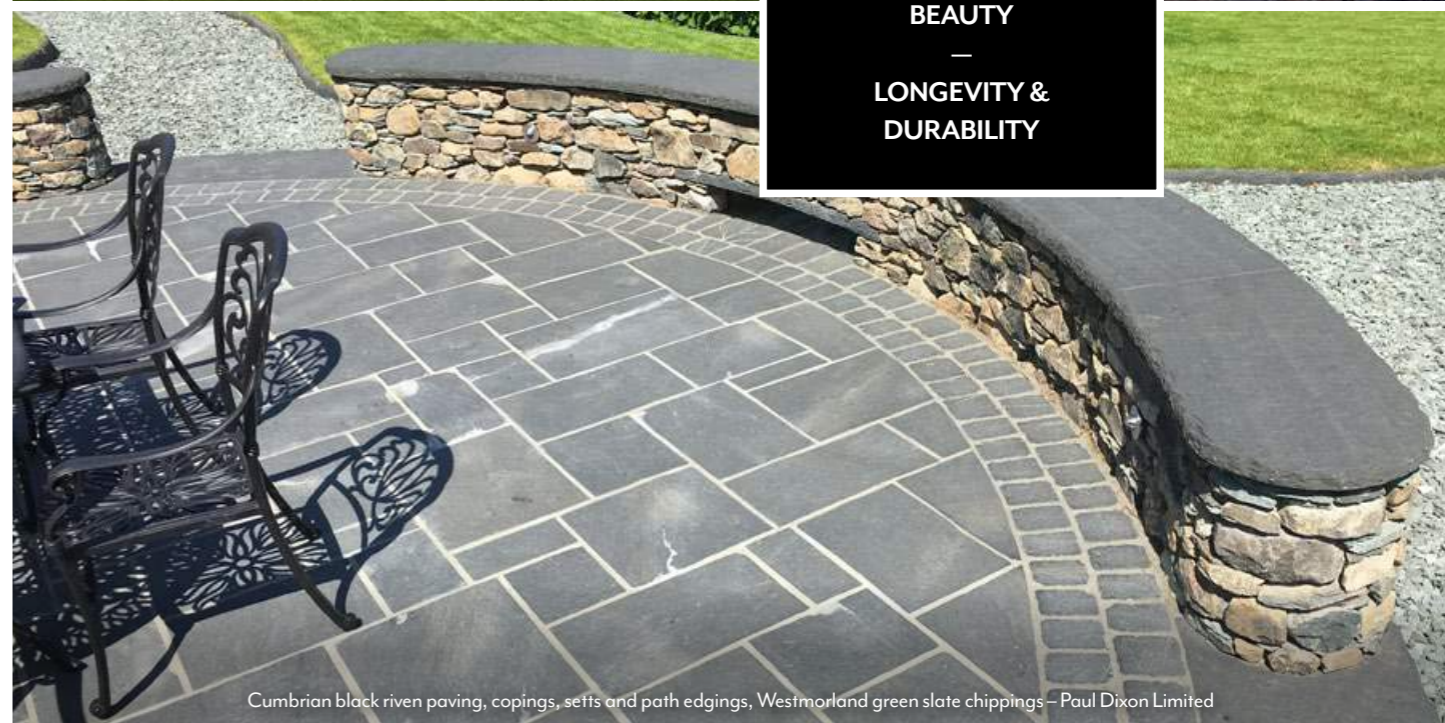


Westmorland green monoliths and slate chippings



Cumbrian black weathered slate walling stone, Westmorland green flamed and plucked copings

  
**NATURAL  
BEAUTY**  
—  
**LONGEVITY &  
DURABILITY**



Cumbrian black riven paving, copings, setts and path edgings, Westmorland green slate chippings – Paul Dixon Limited





# BURLINGTON STONE

EST 1843



Federation  
**stone**  
Great Britain

Ethical  
Stone ✓  
Register  
Verification Level



ISO 9001  
Quality  
Management  
Systems  
CERTIFIED

Q06334

ISO 14001  
Environmental  
Management  
CERTIFIED

EMS573812



Certificate No: 424432023

UK  
BURLINGTON SLATE LIMITED  
Cavendish House Kirkby-in-Furness  
Cumbria LA17 7UN

USA  
BURLINGTON STONE INC  
3112 Windsor Road Suite 232  
Austin Texas 78703 ☎ 972 985 9182

☎ +44 (0)1229 889 661    ✉ sales@burlingtonstone.co.uk



[www.burlingtonstone.co.uk](http://www.burlingtonstone.co.uk)



A member of  
**Holker Group**

